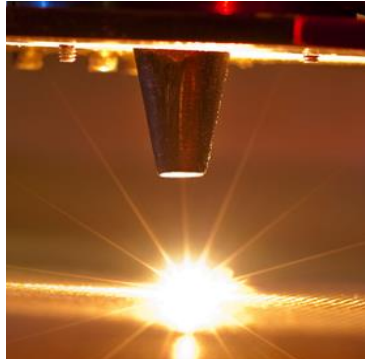
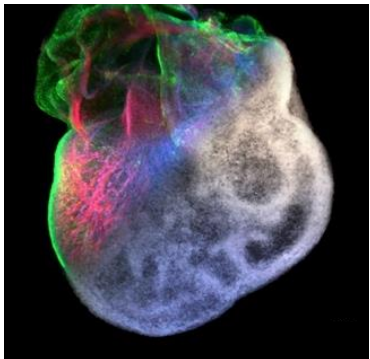
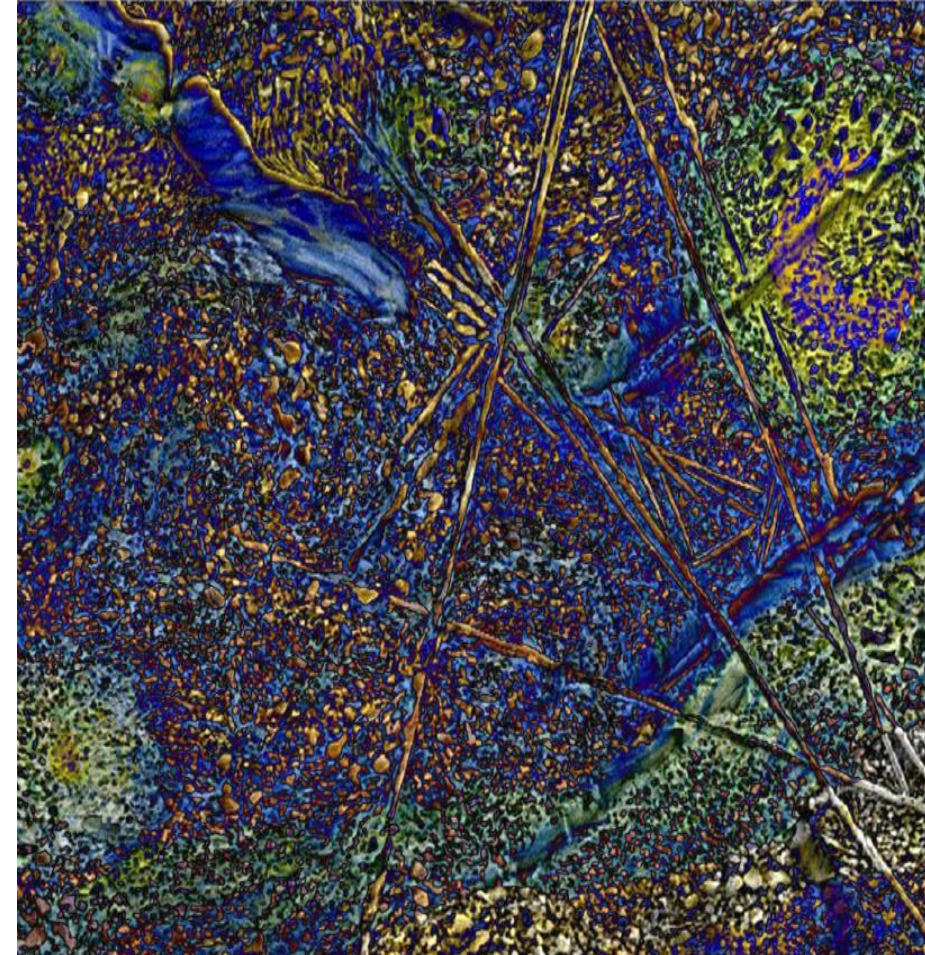
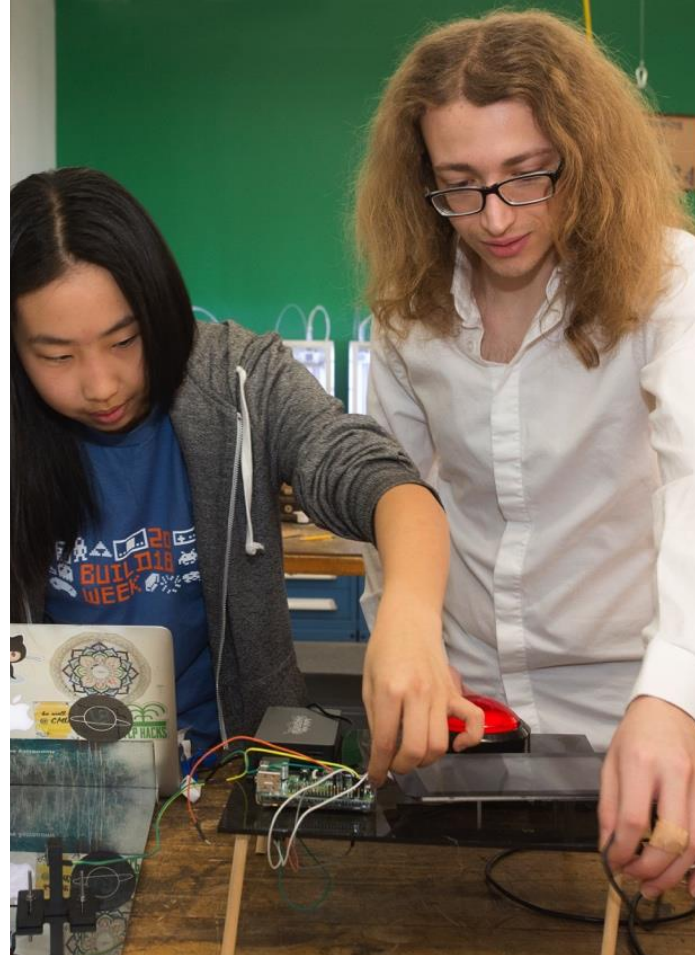


About the College

Carnegie Mellon University
College of Engineering



COLLEGE OF ENGINEERING

DEPARTMENTS

- Biomedical Engineering
- Chemical Engineering
- Civil and Environmental Engineering
- Electrical and Computer Engineering
- Engineering and Public Policy
- Materials Science and Engineering
- Mechanical Engineering

MAJOR INSTITUTES

- CyLab
- Information Networking Institute
- Integrated Innovation Institute
- Scott Institute for Energy Innovation



U.S. News & World Report

Rankings

#4

GRADUATE
COLLEGE OF ENGINEERING

2021
PROGRAM RANKINGS

04 Computer Engineering
08 Environmental
09 Electrical
09 Mechanical
10 Civil
12 Materials
13 Chemical
17 Biomedical/ Bioengineering

#6

UNDERGRADUATE
COLLEGE OF ENGINEERING

2021
PROGRAM RANKINGS

01 Computer Engineering
06 Electrical
01 Cyber Security
08 Environmental
09 Mechanical
09 Materials
11 Civil
15 Chemical
22 Biomedical/ Bioengineering

Global Locations

Silicon Valley

Entrepreneurial ecosystem
and technological
advances

Africa

Training the next generation
of African leaders to drive
social transformation and
economic growth on the
continent



CMU-Africa



Kigali, Rwanda

Silicon Valley



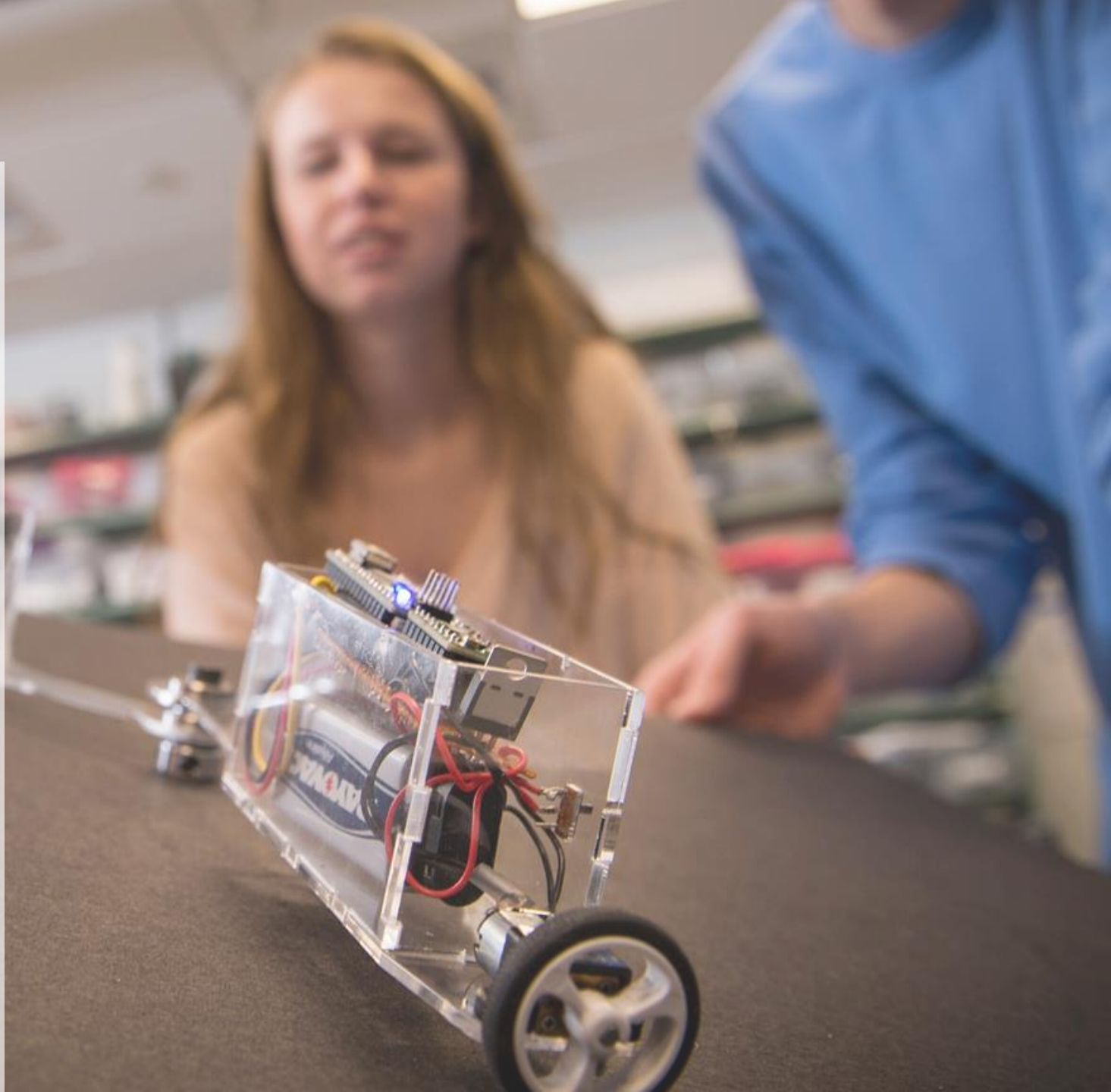
Societal Challenges



CMU is extremely well-positioned to leverage growing emphasis on interdisciplinary research.

AREAS OF GROWTH:

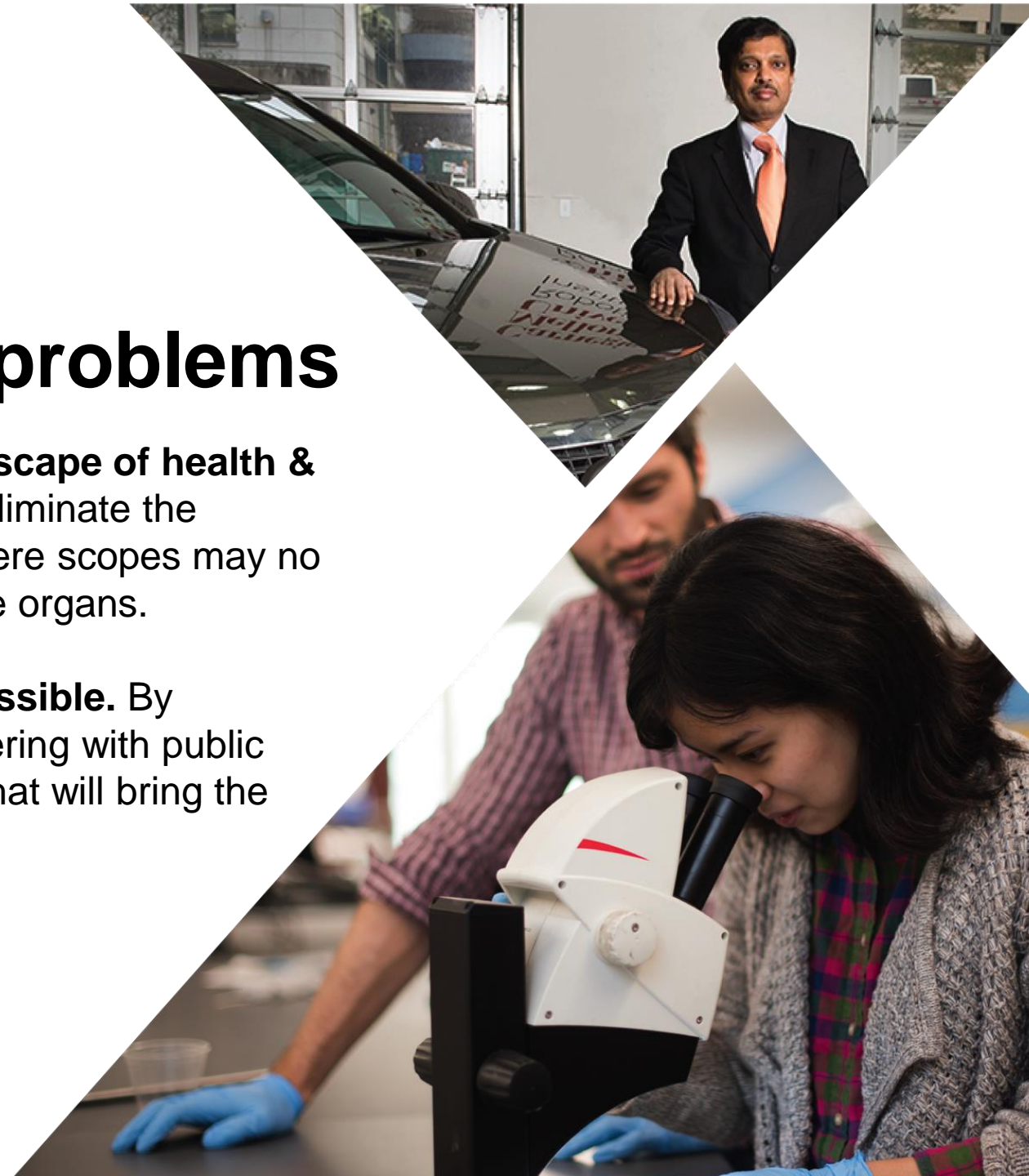
- **AI and Machine Learning**
- **Brain and Neuroscience**
- **Cybersecurity and Privacy**
- **Advanced Manufacturing**
- **Autonomous Vehicles and Robotics**
- **Smart Cities/Metro21**
- **Data Science**
- **Energy**
- **Technology Enhanced Learning**
- **Design, Arts & Technology**



RESEARCH EXAMPLES

Solving complex, global problems

- **We have the potential to change the entire landscape of health & biomedicine.** Bioengineered organs will one day eliminate the transplant waiting list and we will live in a world where scopes may no longer need to be inserted into the body to examine organs.
- **Cleaner energy and better battery storage is possible.** By combining civil, environmental, and energy engineering with public policy research, we are creating holistic solutions that will bring the world into a more sustainable future.



Diversity, Equity, and Inclusion



Thoughtful & Strategic Approach

- A five-year DEI Strategic Plan was created in 2017 and significant progress has been made in the College, particularly in hiring faculty
- The College of Engineering has recruited more GEM fellowship students than any other university in the country
- New Thrive Center in ANSYS Hall will begin with programming to gather and support students



CONNECT WITH US!



@CMUEngineering



@CMUEngineering



Carnegie Mellon University's
College of Engineering



@CMUEngineering



@CMUEngineering



College of Engineering

ADVANCED COLLABORATION[®]



**Carnegie
Mellon
University**